

New Homes

LOOK OUT FOR THE ALL-NEW
NEW HOMES MAGAZINE LAUNCHING
NEXT WEEKEND - MORE CONTENT
AND A FRESH NEW DESIGN!

Breath of
fresh air

WA COUNTRY BUILDERS' AIRLIE BEACH DISPLAY
LAYERS TONES TO CREATE PERFECT HARMONY



Keynotes blend for perfect harmony

BY SANDRA ARGESE

A medley of vibrant tones and sleek lines adorn WA Country Builders' Airlie Beach display.

The mixed palette of materials and textures bathes the display in a crisp ambience reminiscent of a bright day at the beach.

A substantial vertical stack of natural stonework creates a striking street presence, while the home's high ceilings give it its outstanding external elevation.

Labelling the Airlie Beach as a home which would "stand the test of time", WA Country Builders Principal Designer Robert Kirkovski said its aesthetic was underlined by modern and traditional elements.

"Let's call it Australian coastal Hamptons style," he told *New Homes*.

"We wanted the home to be fresh in appearance. White is nice but it can also be dreary, so providing bright colours adds a certain amount of vitality to the home.

"Combining this with the natural timbers, splashes of subtle pastels and a background canvas of comfortable background whites enables the home

to have some character – a persona of happiness, warmth and liveability."

Soaring raked ceilings ribbon themselves throughout the hallway and lead to what is undoubtedly the heart of the home – the beautiful big kitchen, which comes with a generous amount of workspace and a practical scullery.

"The home has multiple areas where any or all of the family can come together and share some moments or go and relax in their own space," Mr Kirkovski said.

"The flow throughout the kitchen integrates form and function; it's a good-looking kitchen with an unmatched layout that anyone would love to have.

"The living and dining areas are restful spaces, great to spend time in reading the papers and catching up on some missed conversation with the family.

"Natural light bathes the area thanks to the soaring raked ceilings and feature glazed gabled windows."

The positives don't end there. More indoor entertaining areas are positioned close to the main living areas, including a wet bar in the theatre room and a dedicated cellar which is visible through an internal window.



Additionally, this home arrives equipped with an elegant music room tucked at the back which could be used for a variety of other purposes.

We wanted the home to be fresh in appearance. White is nice but it can also be dreary, so providing bright colours adds a certain amount of vitality to the home.

courtyard.

Opulent in style, the ensuite hosts high ceilings and a grand double vanity.

"A double-sized, walk-in shower finishes this outstanding space to bathe and relax," Mr Kirkovski said.

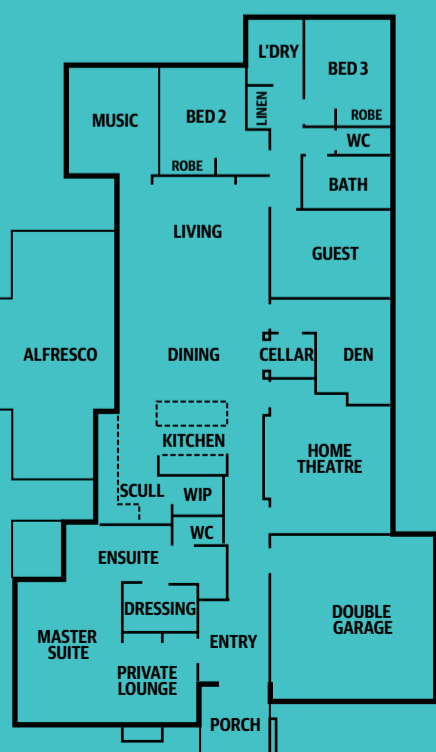
"The master suite with its luxurious hotel-style suite would encourage a long sleep-in and perhaps a morning coffee at the private outdoor area. The sheer size of the room coupled with its stylish ensuite makes you feel like you're on holiday."

"You can unwind from the week by playing an instrument or listening to some music with your feet up," Mr Kirkovski said.

Well-positioned at the front of the home, the master bedroom is all about privacy. This retreat includes a lounge area, large ensuite and direct access to a beautiful

The exterior continues the display's impressive list of features. An area with cover spanning 8.5m by 4.5m, this space is large enough to cater comfortably for both outdoor living and alfresco dining.

The Airlie Beach is located in Australind and is open for viewing on Mondays and Wednesdays from 2-5pm and Saturdays and Sundays from 1-5pm.



AIRLIE BEACH

4 2

ADDRESS 11 Chamaeleon Approach, Australind

PRICE From \$195,000

BUILDER WA Country Builders

CONTACT 1800 227 161

www.wacountrybuilders.com.au

